



The Next Step in Belting



Industrial Applications Album

Conveying Solutions

The Next Step in Belting

Table of Contents

Flat Belts for Industrial Applications	3-22
'V' & Round Profiles	23-36
Timing Belts	37-41
The Art of Fabrications	42-44
Roller Coating Sleeves	45-47
Power Transmission	49-55

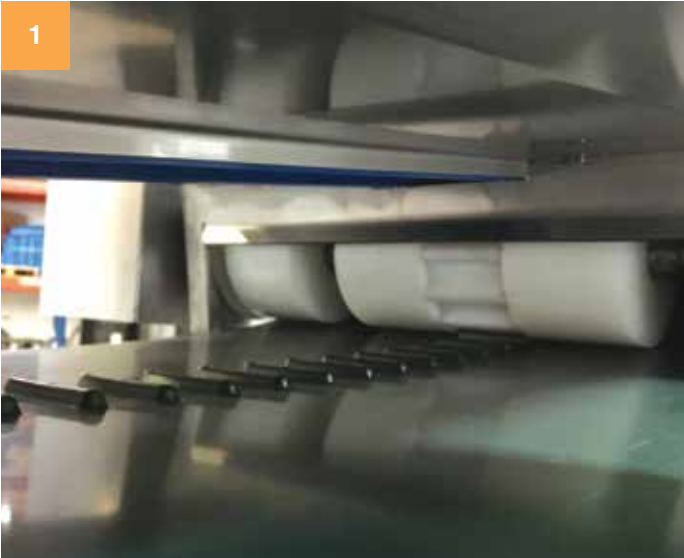


Conveying Solutions

Flat Belts for Industrial Applications



SuperDrive™ FZ-SD



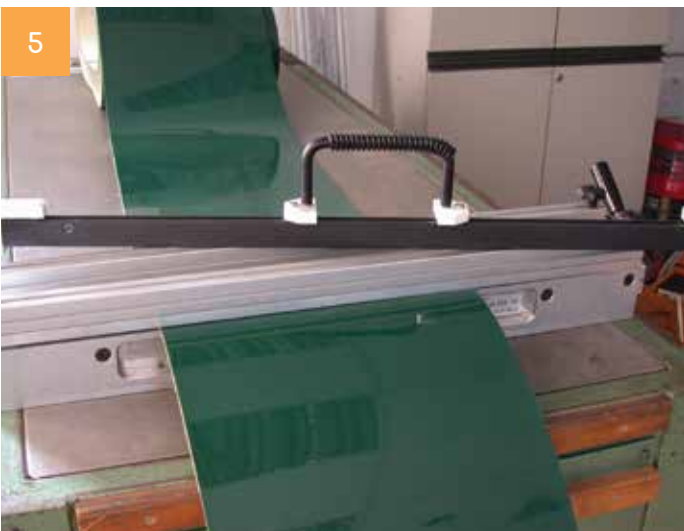
FRPZ-8 belt repaired
with electrode



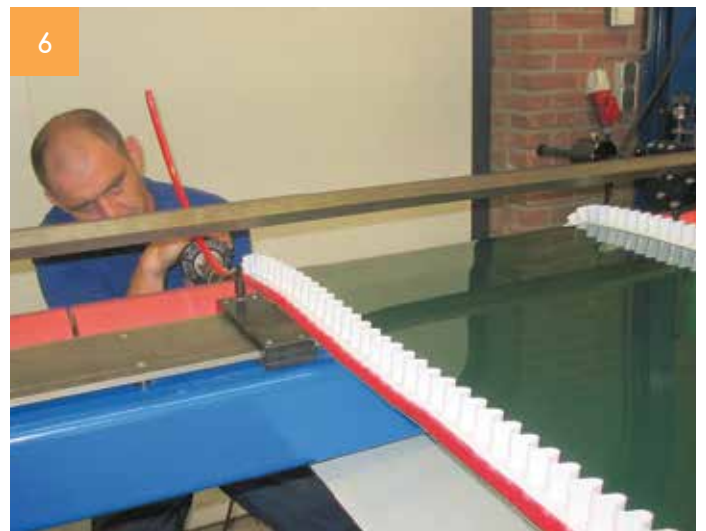
Based Sidewalls



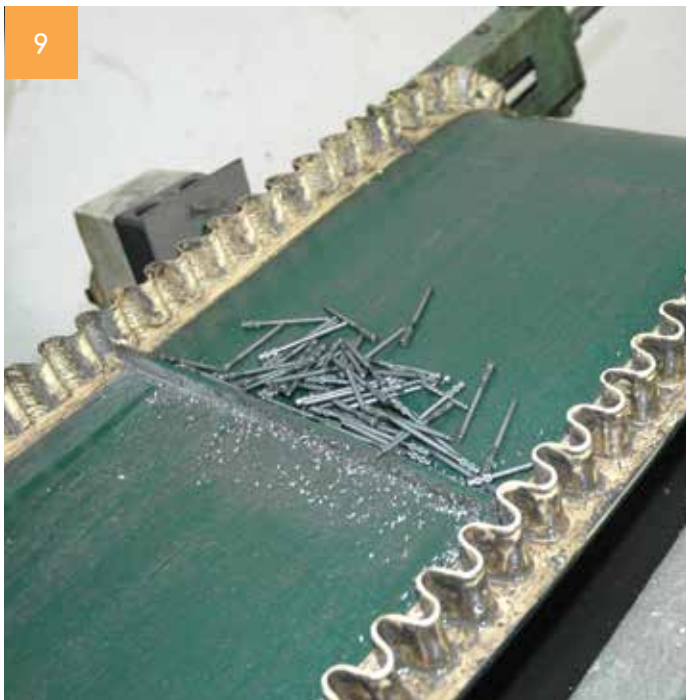
On Site Welding



Fabricating a Belt



Volta Belts with Sidewalls and Flights in Nail Production



Volta Belt with Flights for Conveying Bolts



Volta FRG and FRG-ST Belts in Automotive Industry

Car Panels - Post - Stamping Conveyors - Cut Resistant and No Delamination

12



13



Recycling Car Parts

14



15



16



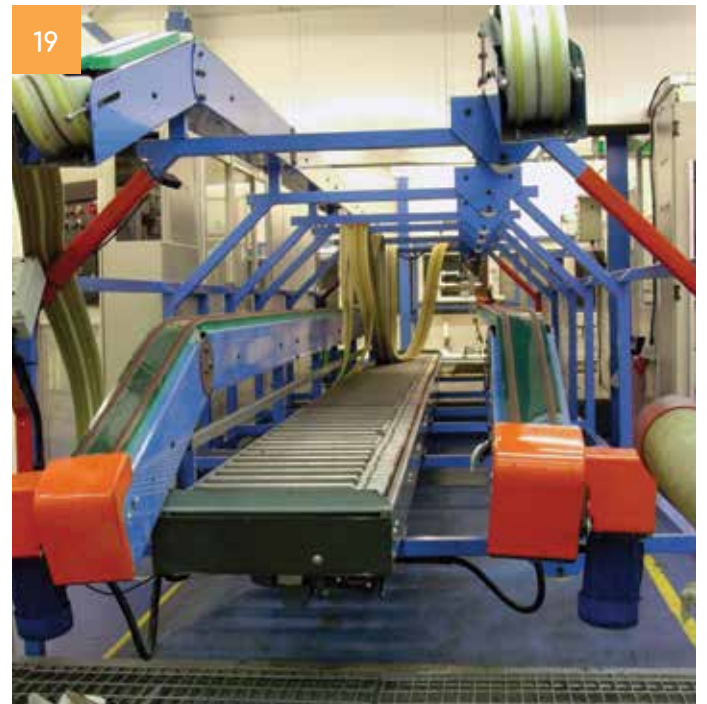
17



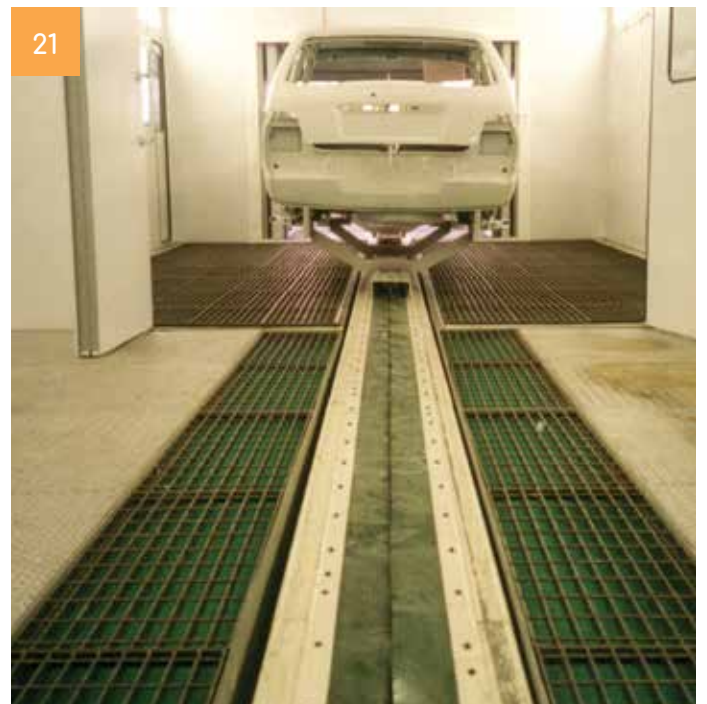
FEZ 3.2 with Sidewalls Used before Spray Painting - Non Fraying and Silicone Free



FEZ 3.2 with CL/VL Guides used for minimum contact with the products



Perforated FK Belt



Steel Wrapping Belt

22



23

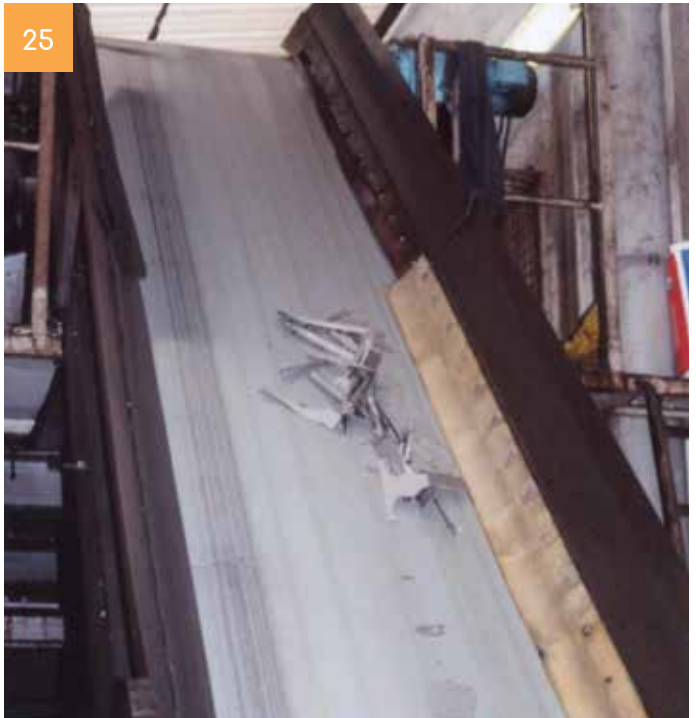


24



Aluminum Recycling

25



Metal Stamping

26



Metal Cutting

27

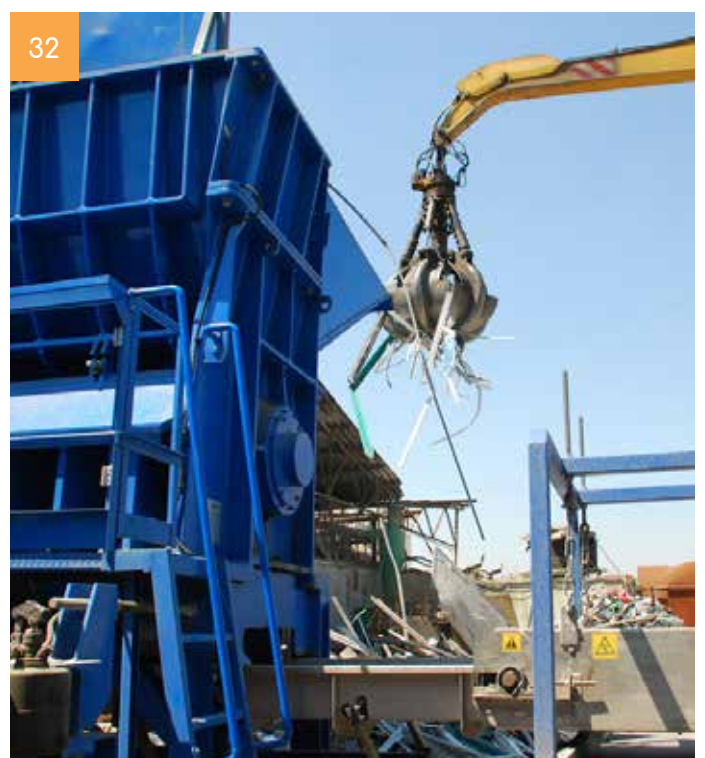


FEZ-2 with SW-20 in Aluminum Shearing

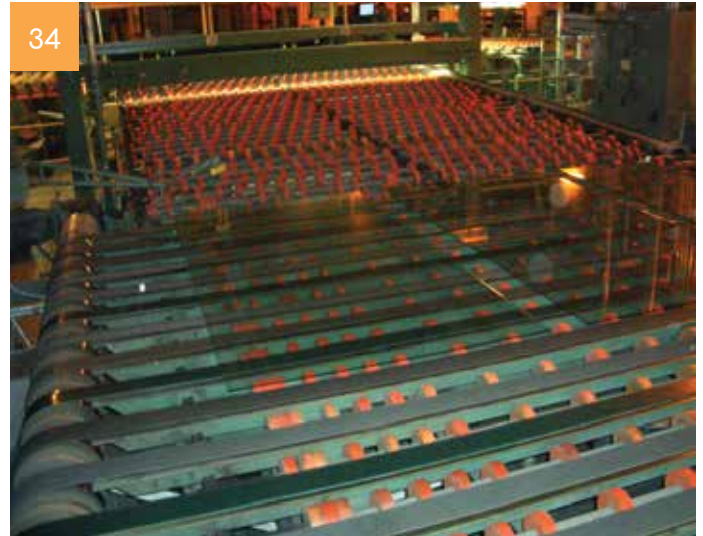
28



Magnetic Metal Separator with Cut- and Impact-Resistant Belt Eddy Current Separator



Volto FRZ-5 Narrow Belts in the Glass Industry



Glass Recycling



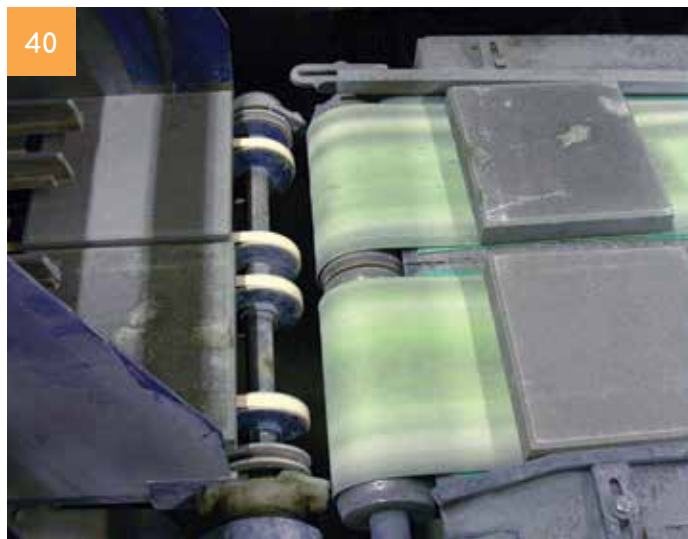
FRZ-5 in Breeze Block Production

39



FK-3 Belt & VMW-17 Profile in Floor Slab Production

40



FK-3 belt in Brick Pre-Oven Conveyors

41



42



FRPZ-3 Belt and VLW

43



Volto Belts in Ceramic Tile Production Line

FRZ-3 & Vertical Double V-Profile



FRZ-3 & Sleeves



FRZ-3 Tile Powder - Trough



FMB-4-SD



Paper Recycling

49



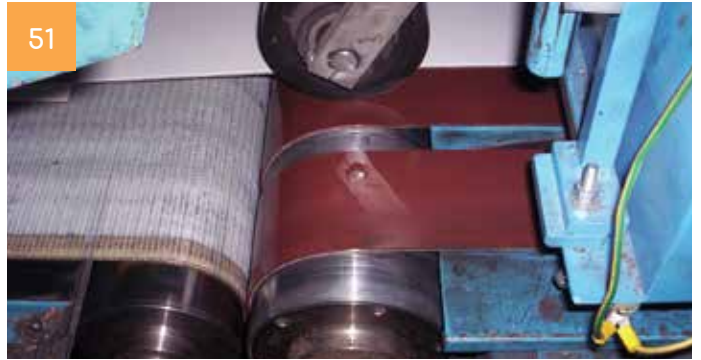
Stacker

50



Corrugated Carton

51

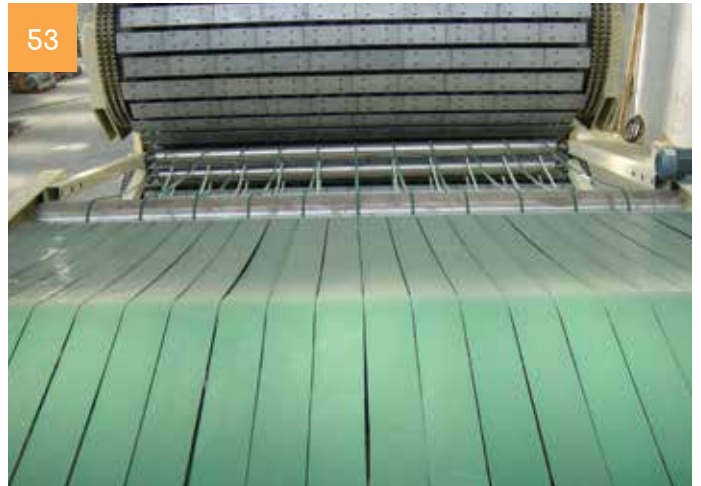


Carton Box Folding - Easy Assembly with Volta P-200 Pliers

52



53



54

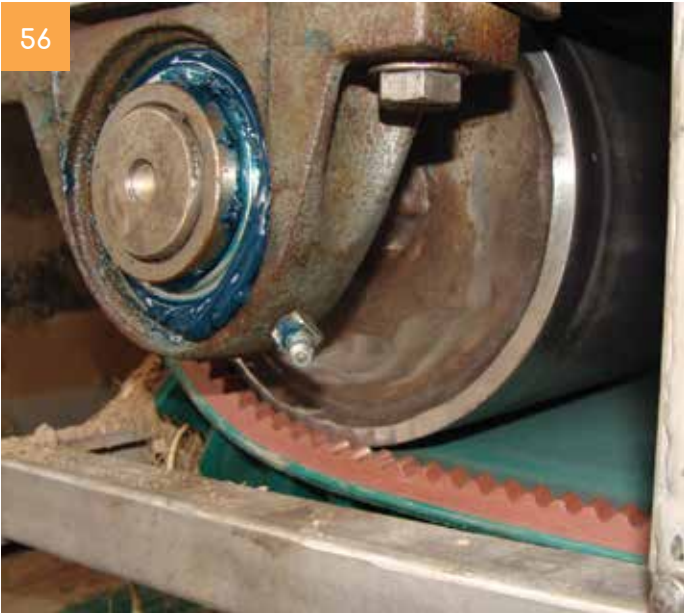


55



Sewage Treatment Lines

56



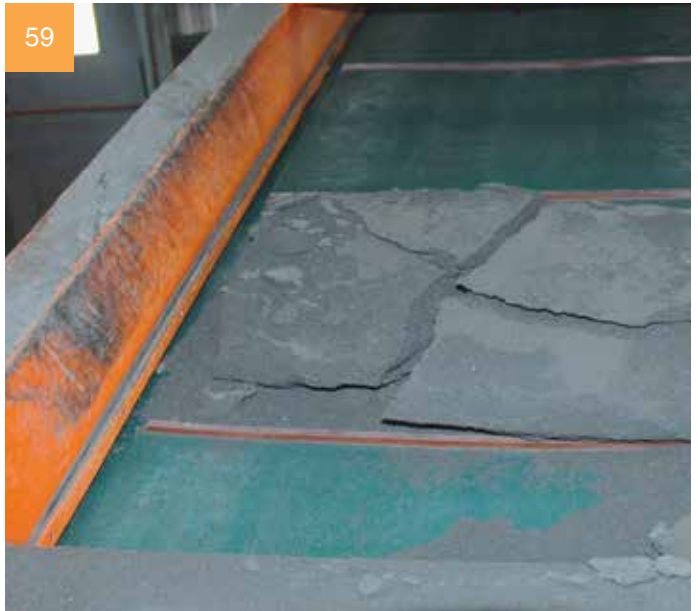
57



58



59



60



Corundum Conveying

61



Caustic Soda

62



Salt Processing

63



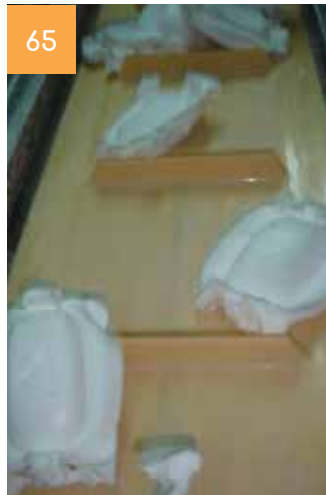
Fertilizer Trough belt - FRZ-5

64



Volta Belts with Flights in the Soap Industry

65



66



Detergent Conveying Lines

67



FMB-3-SD

68



Biomass Recycling

69



70



SuperDrive™ Belt in Gravel Conveying

71



72



Stone Cutting - Perforated FMB-3-SD

73



Cotton Processing

74



Blow Room Bale Opener

75



76



Textile Cutting

77



78



| Ice Production



| Plastic Injection Molding Line



| Laminator FRLW-1.6

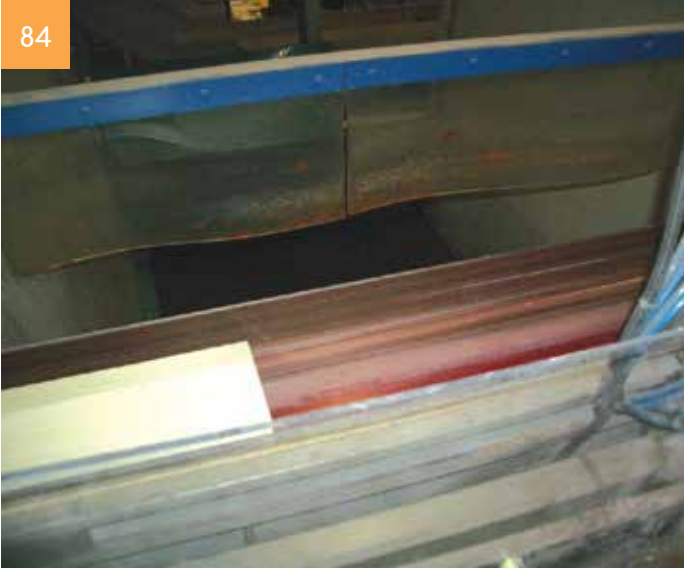


| Wood Processing



Wood & Plywood Processing Lines

84



85



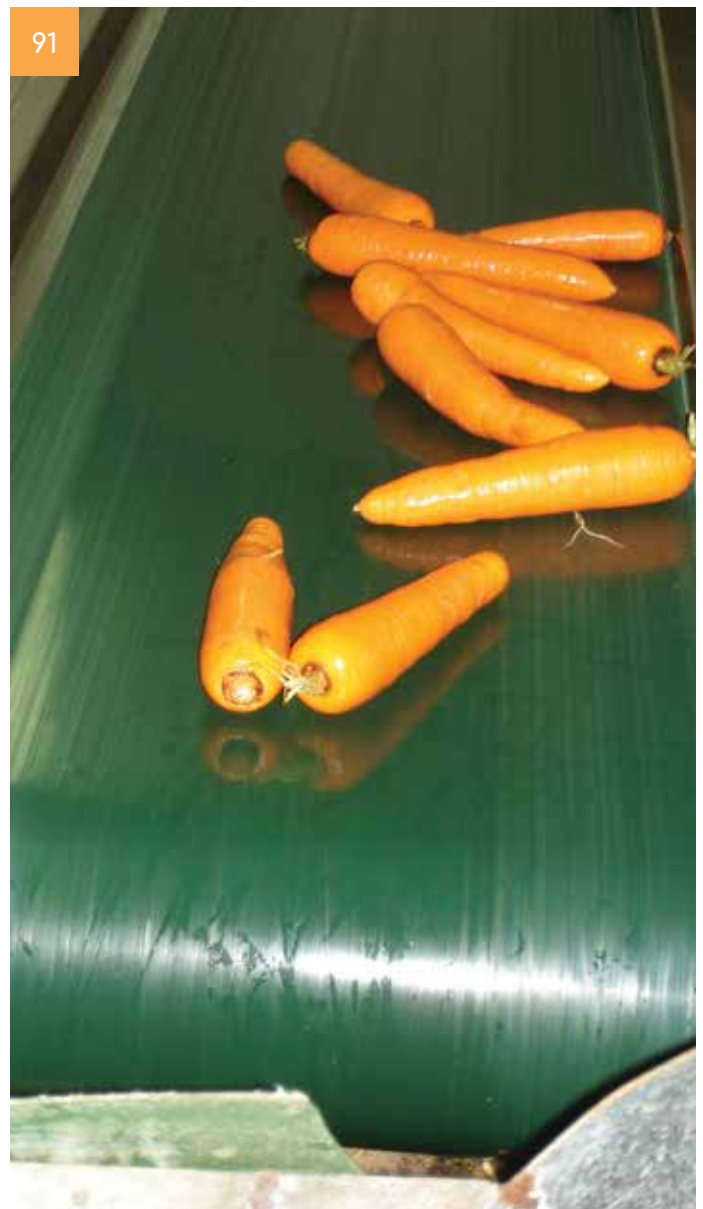
86



87



| Carrot Washing



| Potato Washing and Sorting



| Hammocks



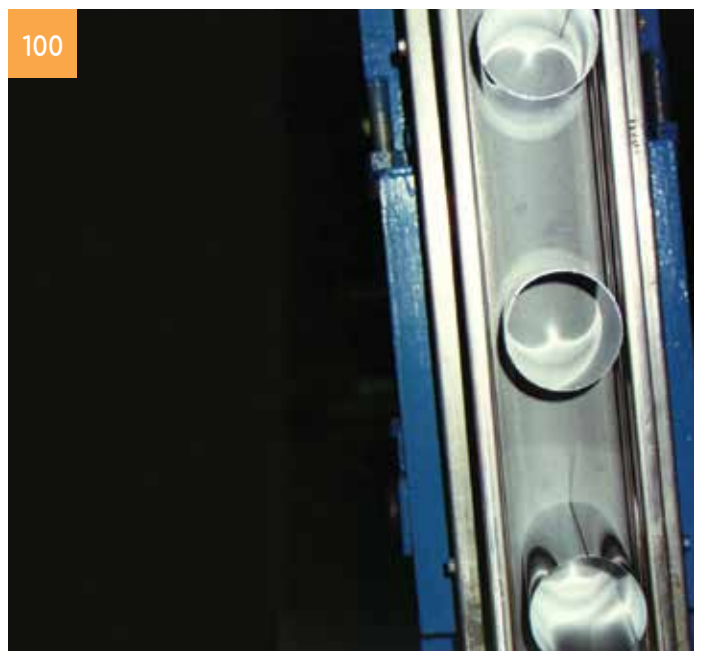
FRZ -3 in Peanut Intake



Magnetic Elevator



Zucchini & Aubergine Packaging



Cushion Belts



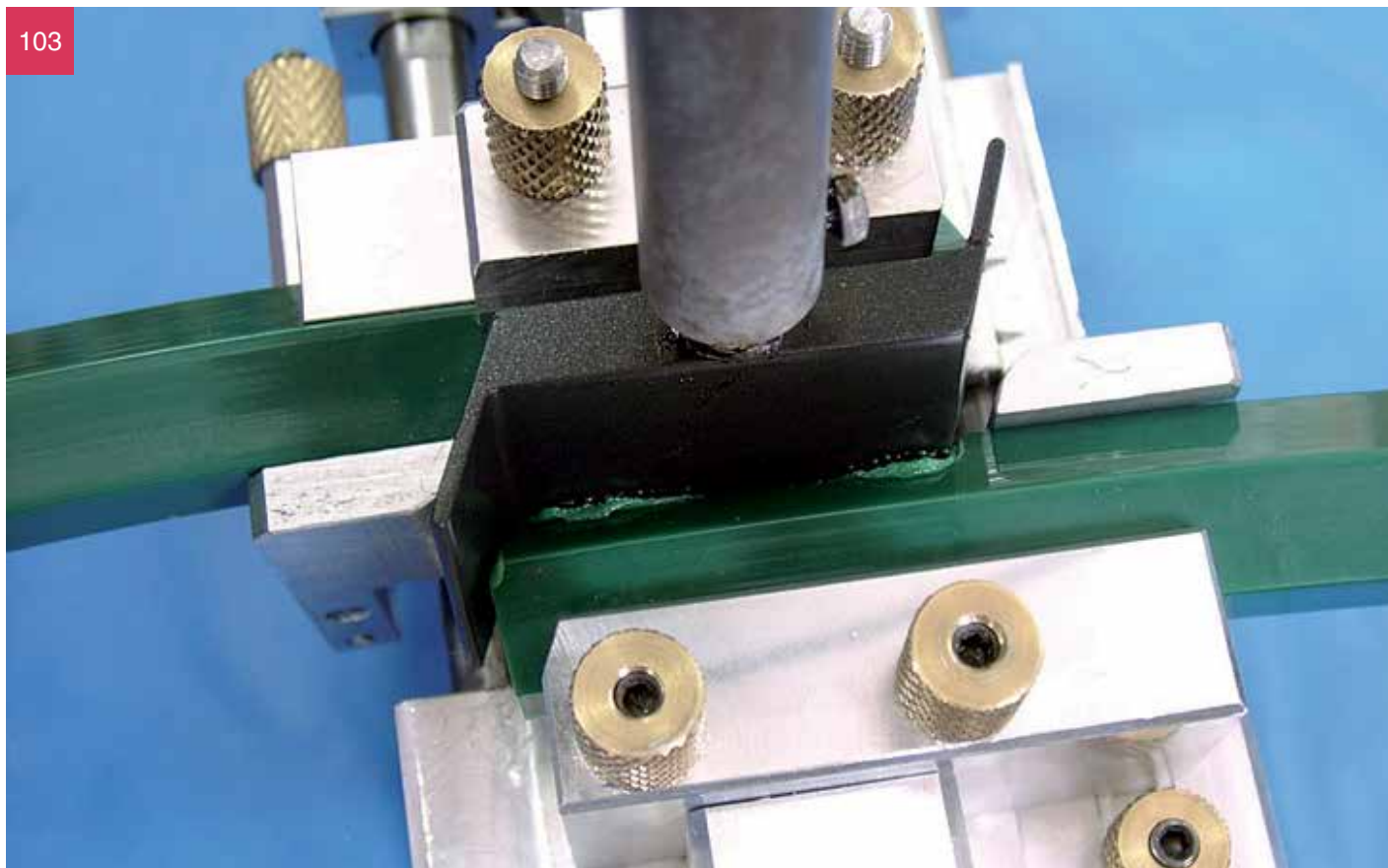
Conveying Solutions

`V` & Round Profiles



Overlap Welding - Using Volta Tools

103



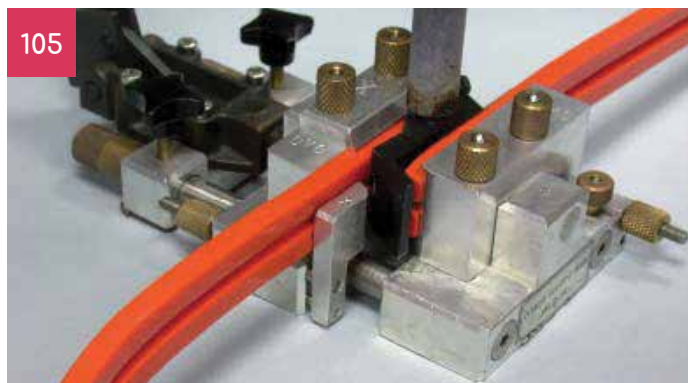
F-51 Pliers for V&Round Profiles

Easy Overlap Welding Tool

104



105



Mini Pliers R-8

F-51 Pliers for Special Profiles

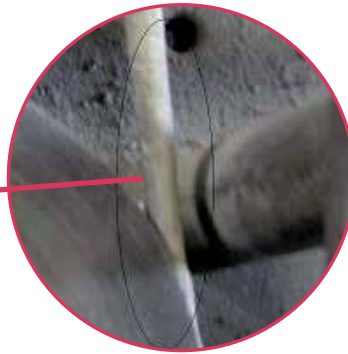
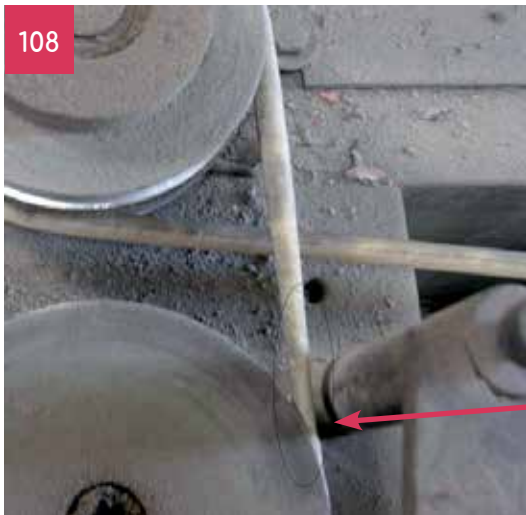
106



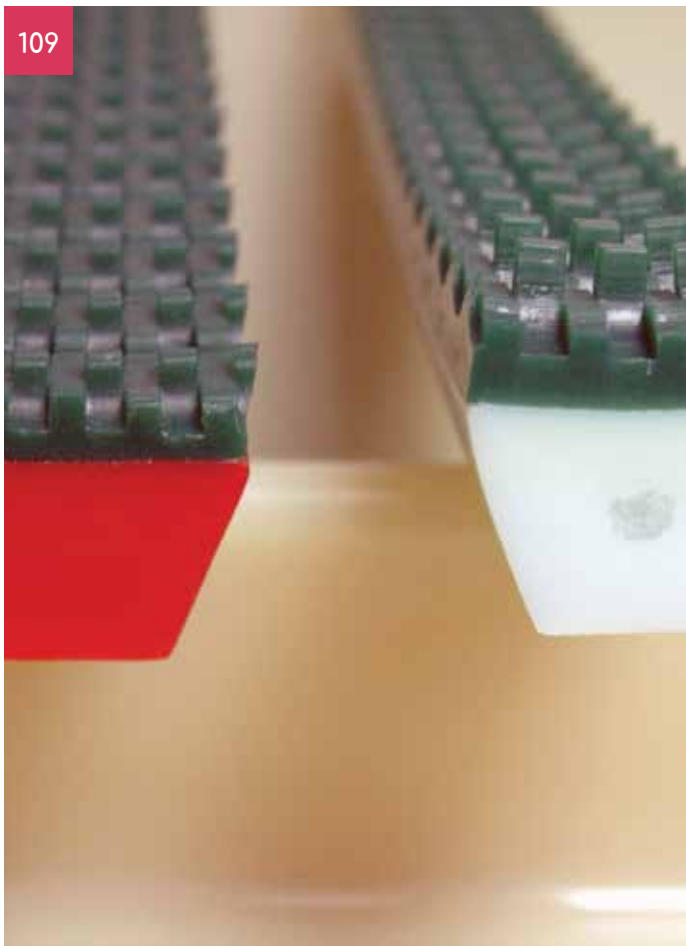
107



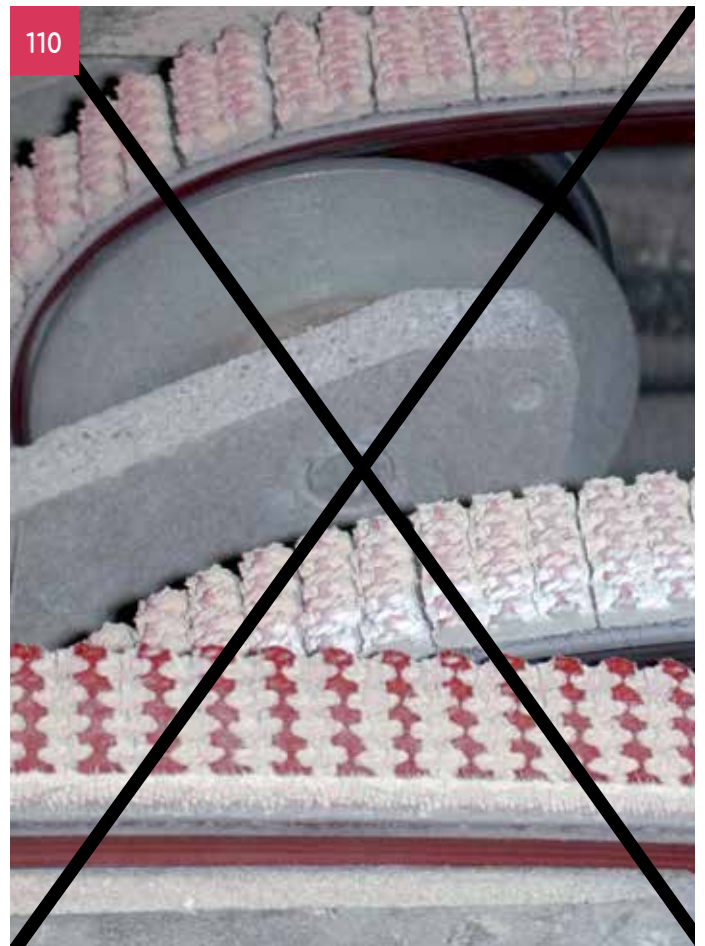
Necking Effect can be Prevented by Using Overlap Welding



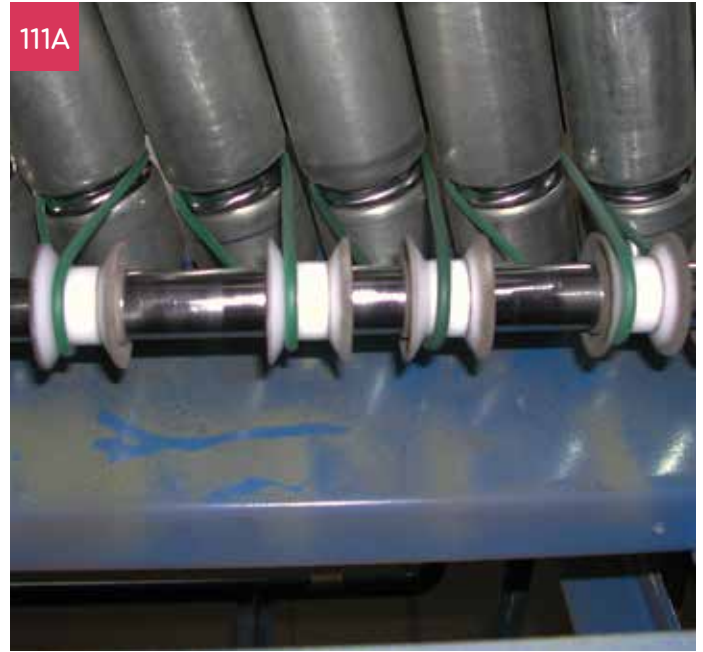
Volta Multi-Grip and Super-Grip
Welded on Volta V-profiles



Glued-on Non-Volta Grip Type
Coating on V-profiles



Volta Round Belts Used on Ring Activated Rollers



Volta Profiles in Special Machines

114



115



Roller Drive

116



117



PU top Profile for Chain Drivers

118



SPY-1000

119



SPN-1000

120



Volta VM-17/B Profile on Beer Can Elevator

121



122



RCW - Canning Lines

123



124



125



Can Elevator Lines - RCW/ RCW-SR (Steel Reinforced)/RCW-SSR (Stainless Steel Reinforced)

126



127



128



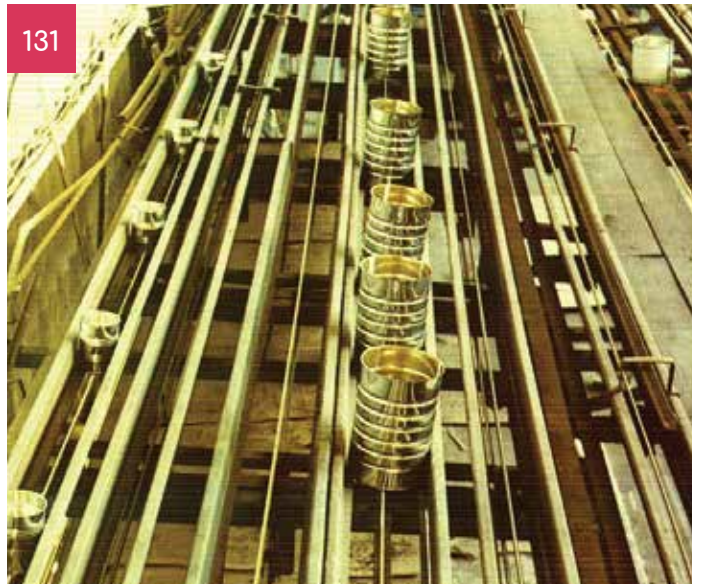
129



130

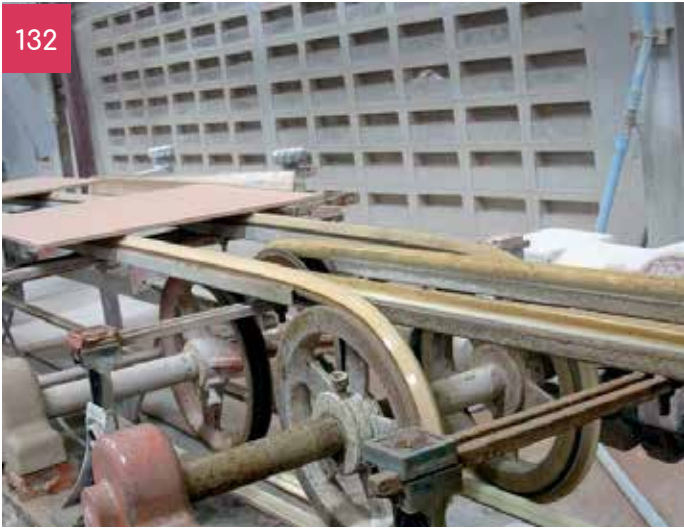


131



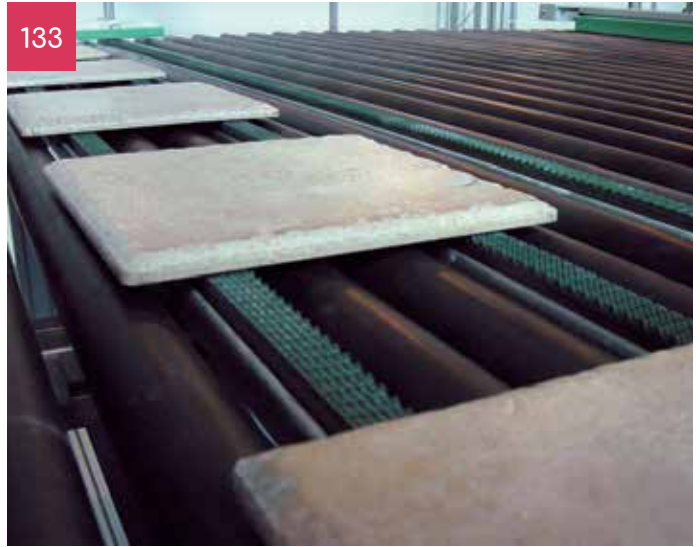
Volta VPF-17-RT Profile in Tile Glazing Lines

132



Volta V-profile with Multigrip in Floor Tile Manufacturing

133



RPZS/RPS Profile for Floor Tile Conveying on Corners

134



135



136



YPF-17 Profile

137



RPS-15 Profile and FRMW-4 Belt for Roof tile Conveying



RMW -15 Profile for Concrete Tile Conveying

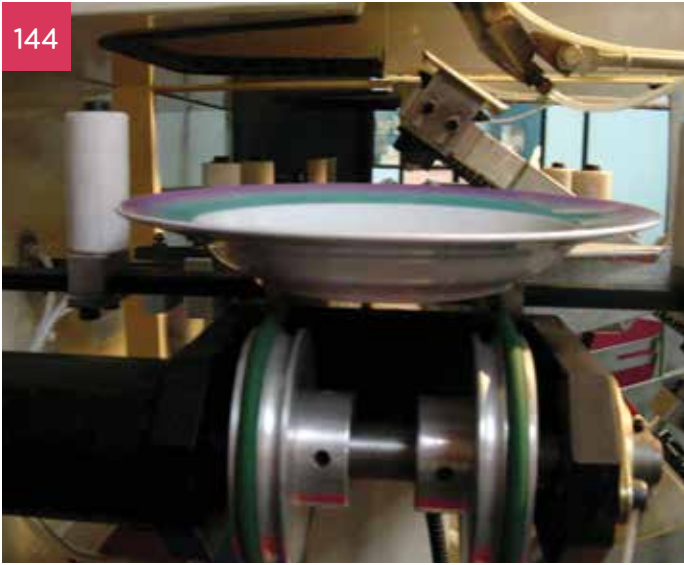


VM -22 Raw Clay-Brick Conveying

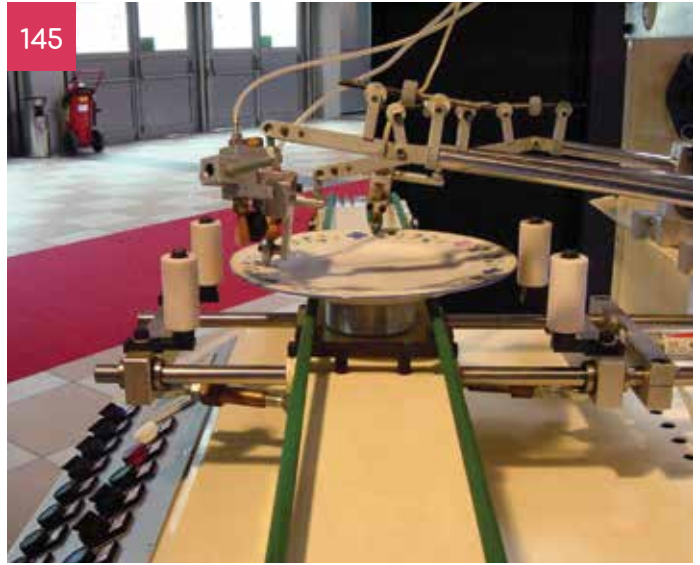


RPN/RPS in Ceramic Printing Lines

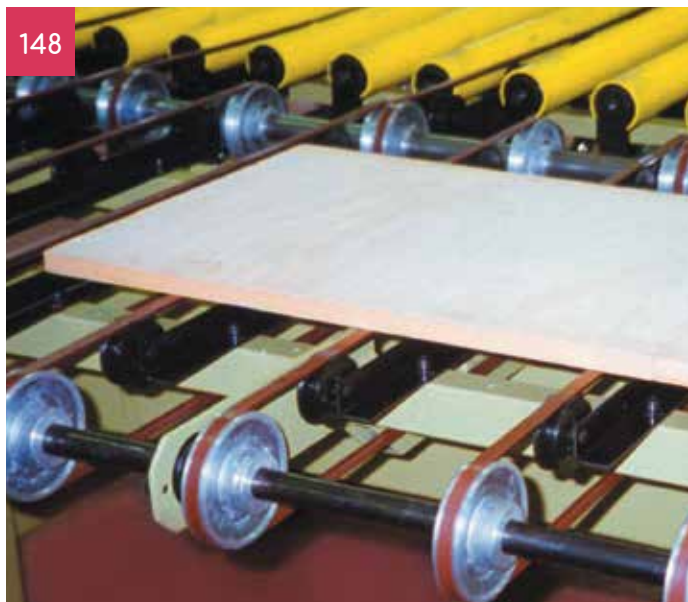
144



145



RMW -15,RPZS-15, VPZS-13, VPZ-SG Profiles for Wood Panel Conveying



Volta RLC profile in Library Automation System



Volta RPS and VL profile in Cardboard Production



Mail Sorter



Sheet Printing - RMW



Rubber Gloves - VM



DVFC-13 & DVOS-30 in Plastic Bottle Handling



VBL-BB-17 in Glass Conveying



RPS Profile in Glass Conveying



Apple Washing - RL- Profile Welded as Agitator



RPS in Mushroom Sorting



Tray Conveying



Olive Sorting

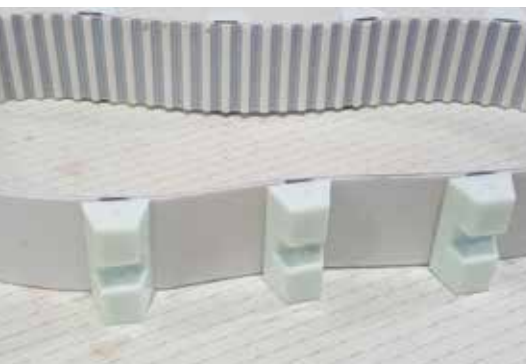
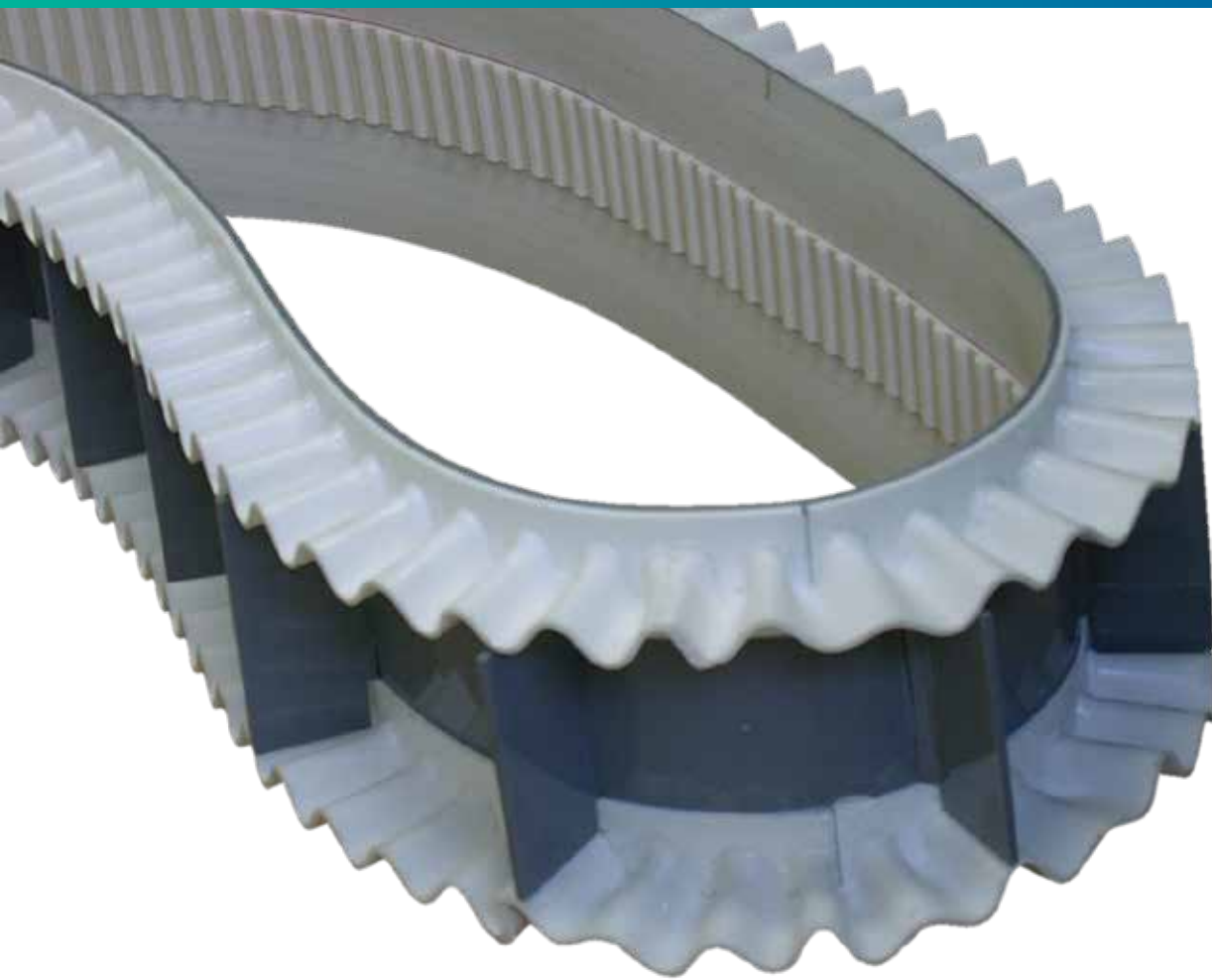


Ornamental Plant Coding Line



Conveying Solutions

Timing Belts



Volta Fabricated Timing Belts on Wet-Wipes' Applications

168



169



170



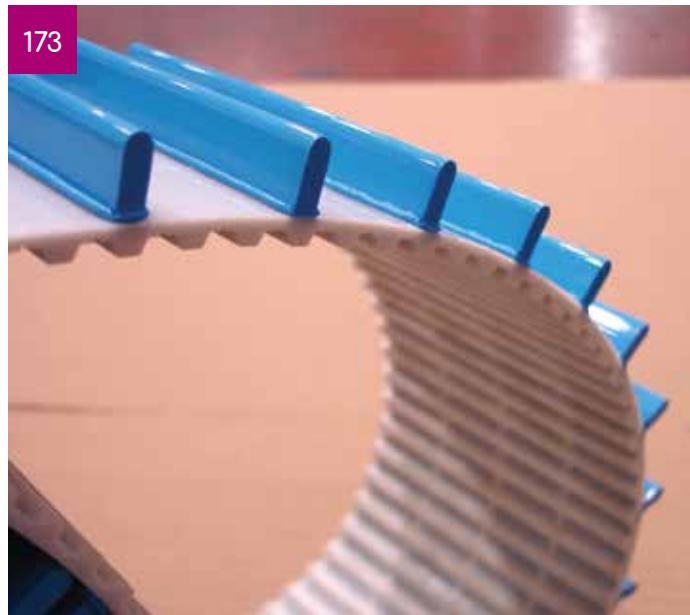
171



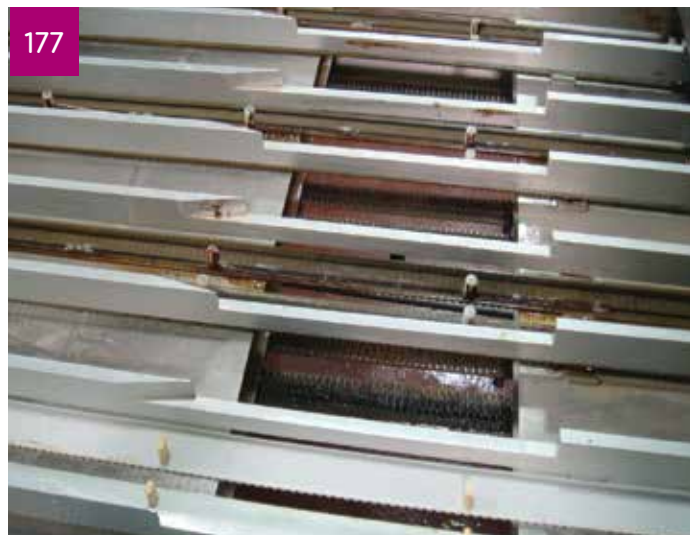
172



Fabricated Timing Belts in the Plastics Industry



Volta Fabricated Timing Belts in Bakery



Machined FMB Belt with Grooving Welded on Timing for Glass Conveying

179



Double-V & Round Profile Welded on Timing for Paper Folding

180

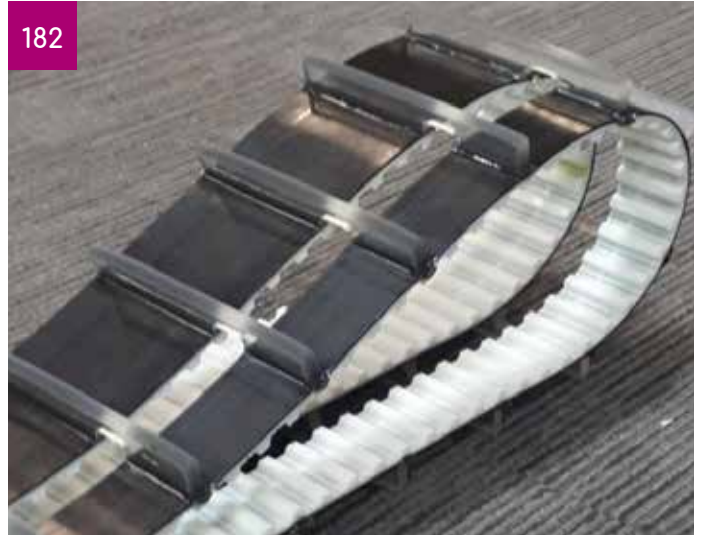


Unmanned Vehicle Tracks

181

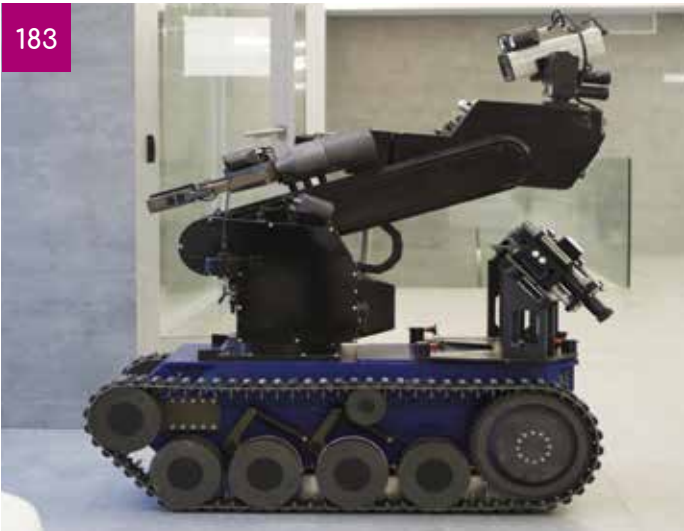


182



Synchro - Track

183



184



|VLW-SG Welded on Timing



|Volta Fabricated Timing Belts in Lip Pencil Lines



|Volta Timing Belts welded on FRG Belt with Sidewalls and Flights



Conveying Solutions

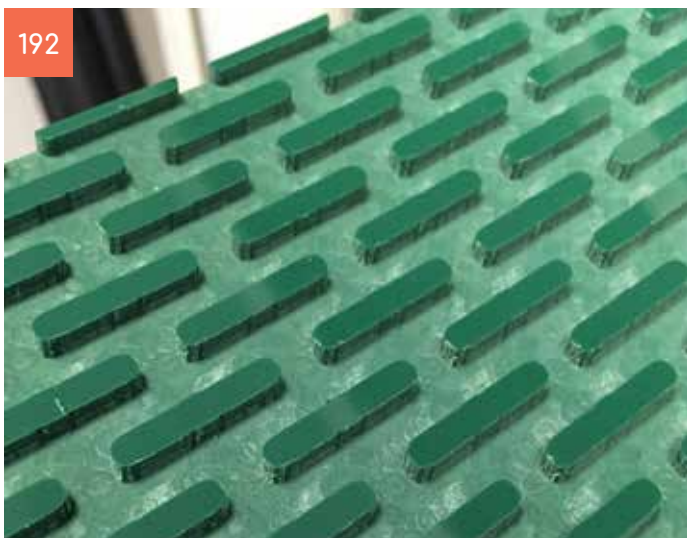
The Art of Fabrications



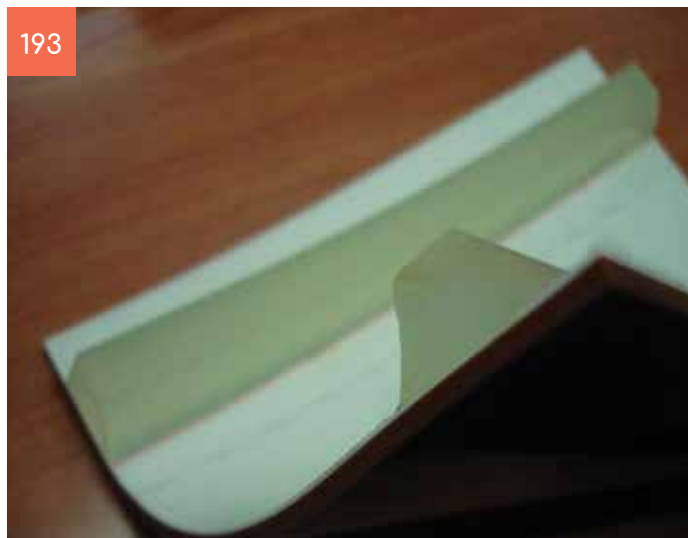
FZ-SD- 3.20m Wide - Longitudinally Welded



Grooved Top Machined Pattern



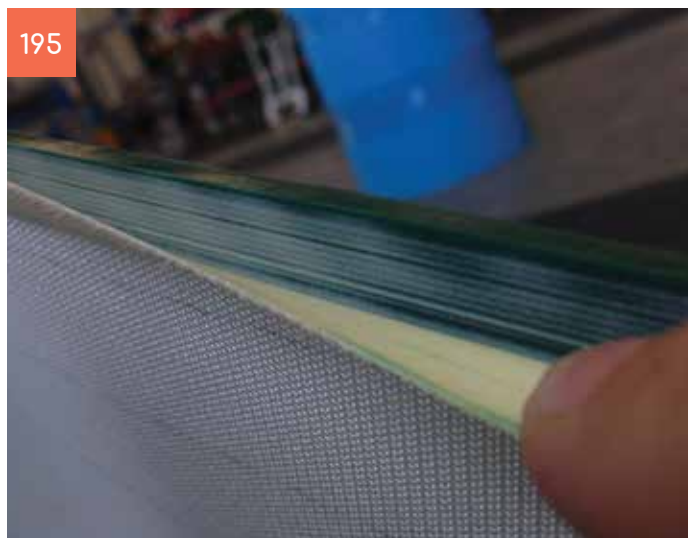
Guides on Reinforced Belt



Perforated Reinforced Belt

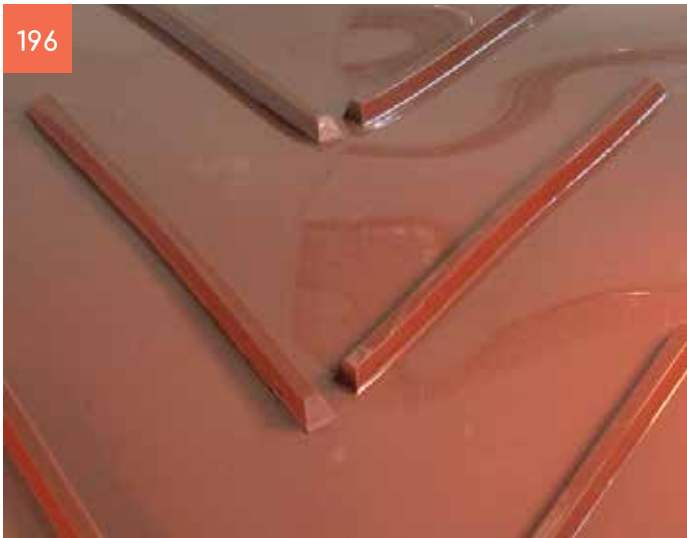


Recessed Edge



Chevron Cleats

196



197



Flower Support Belt

198



199



Live Roller

200



201



Conveying Solutions

Roller Coating Sleeves



Sleeve Mounting Illustrations

202



203



204



205



206



207



Volta Sleeves in the Ceramic Tiles Industry

208



209



210



211



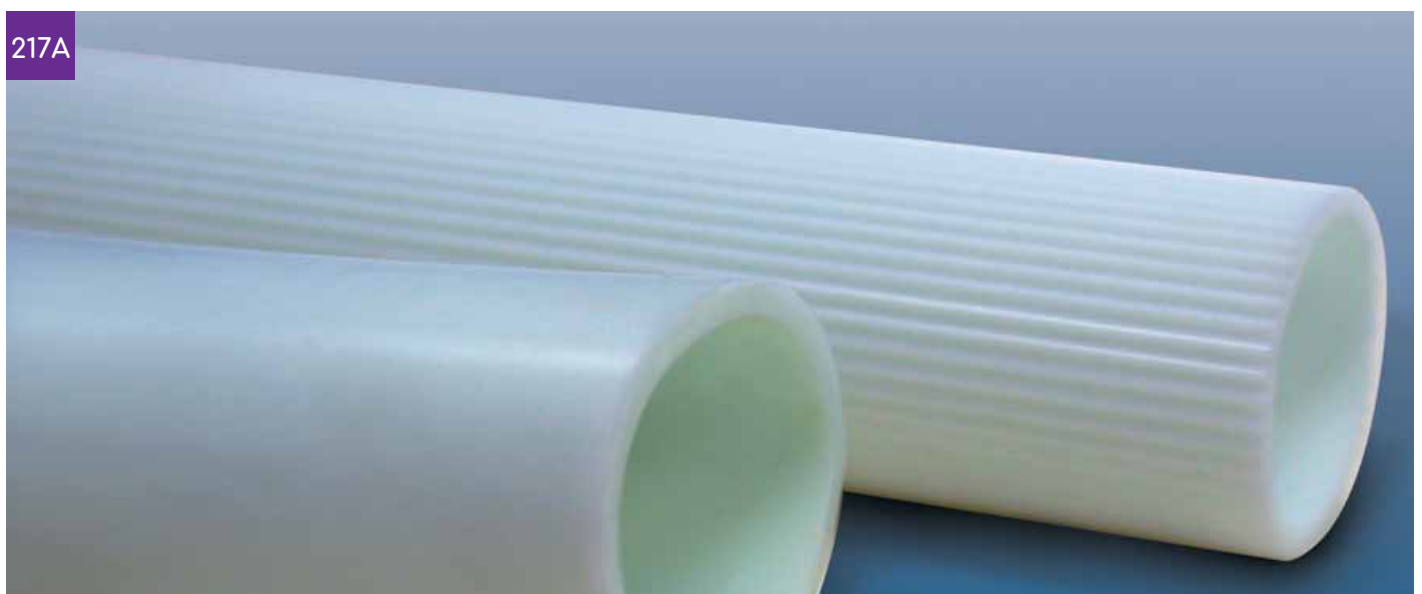
213



214

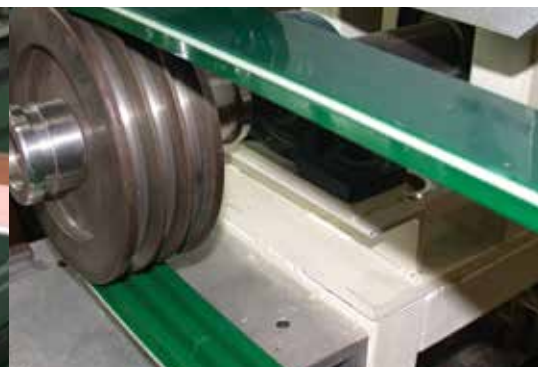


| Volto Sleeves in the Wood Industry



Conveying Solutions

Power Transmission



Volto Power Belts in the Wood Industry - Edge Banders & Tenoners

218



219



220



221

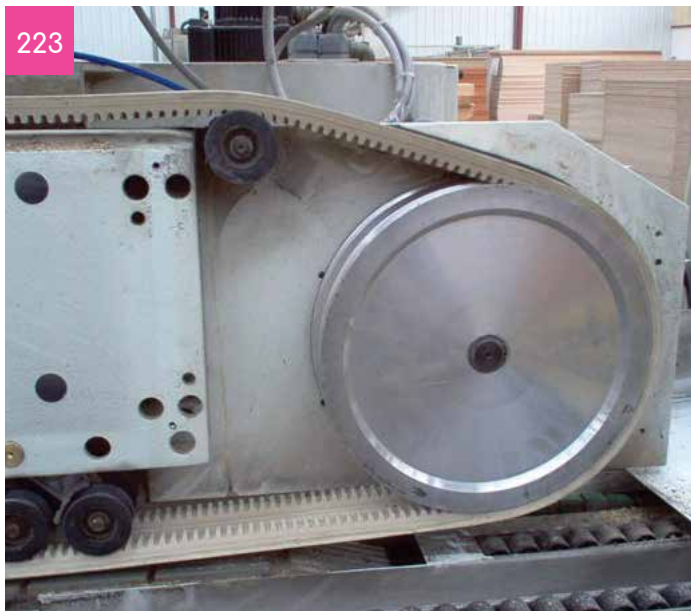


Post-forming

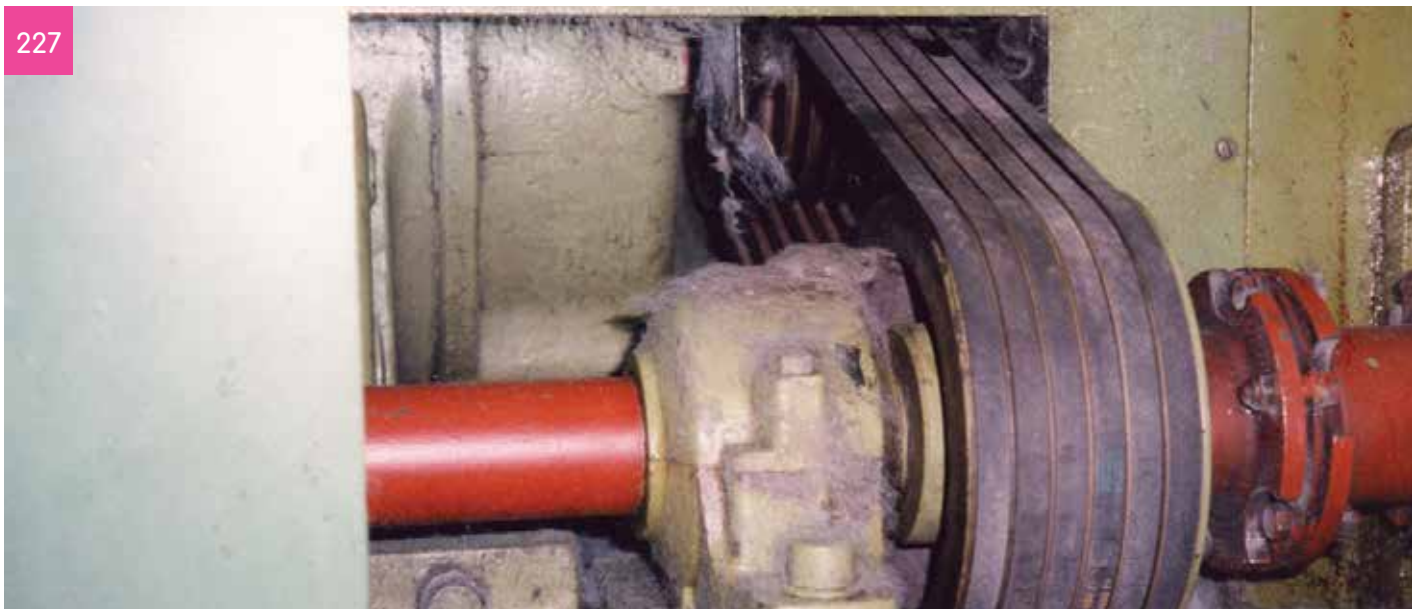
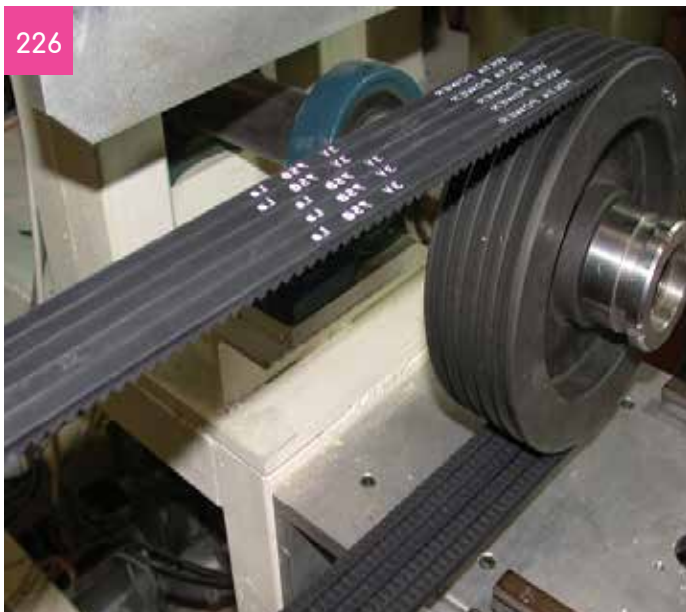
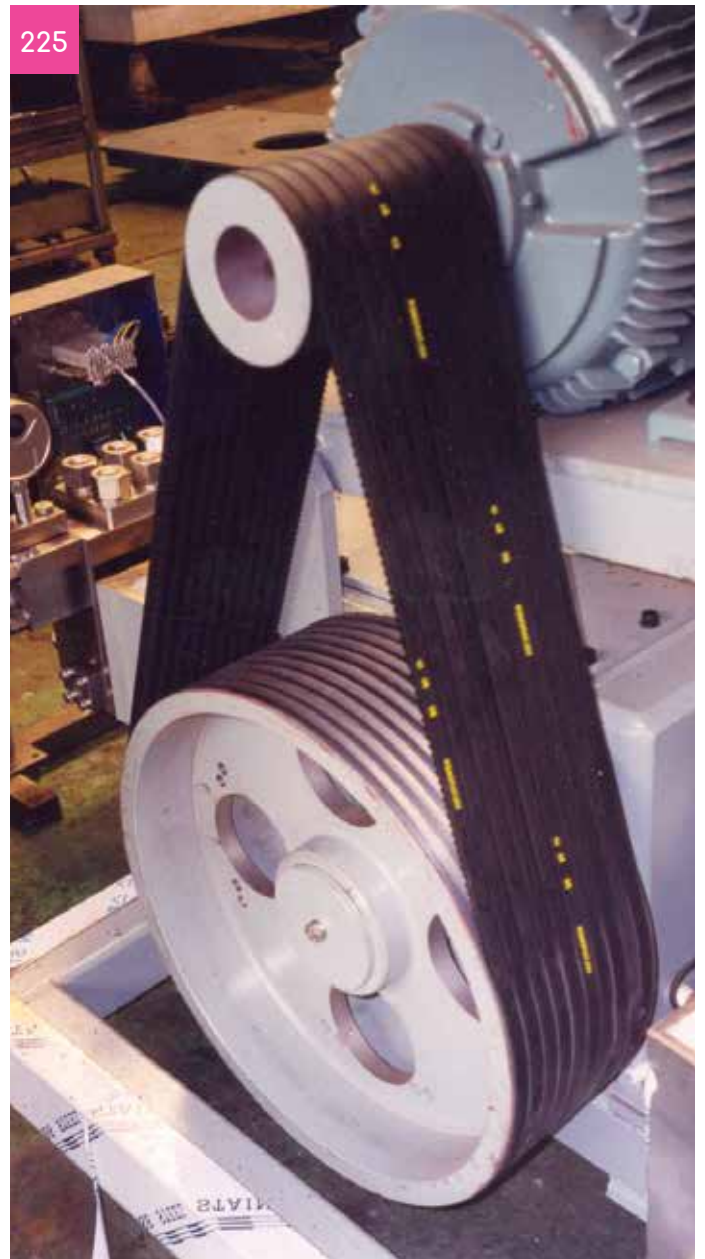
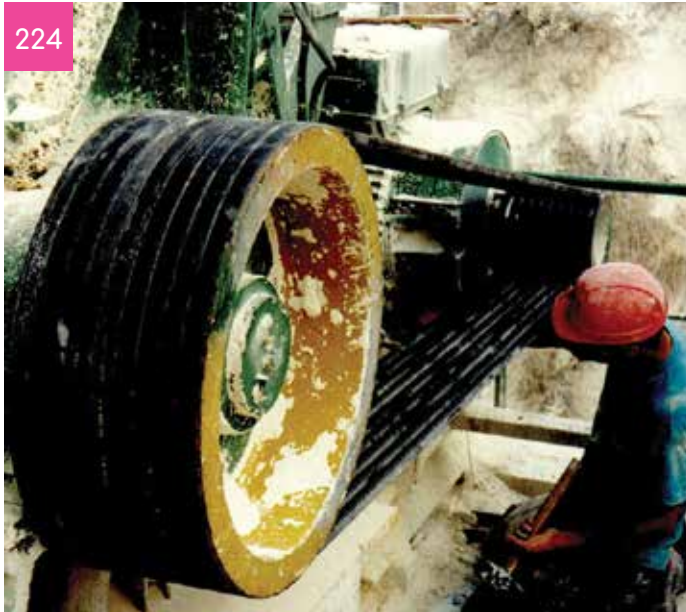
222



223



Volta Power Belts in Mining and Industrial Applications



Volta Power Twist

228

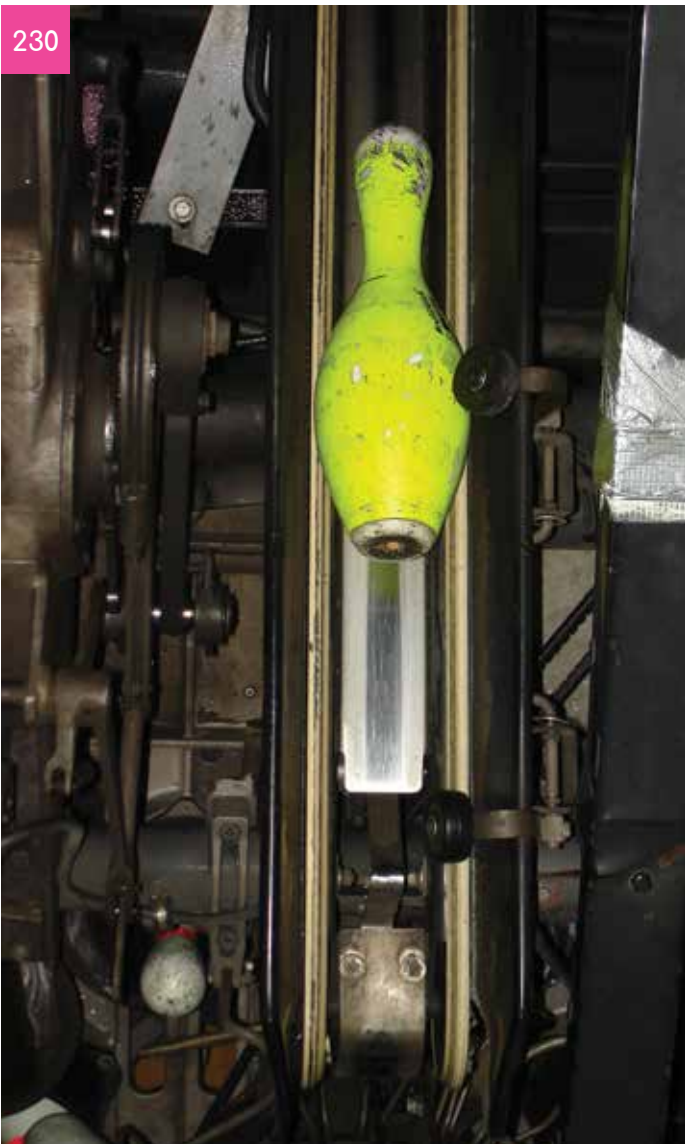


229



Volta Power Belts in Ten Pin Bowling Machinery

230



231



Haul-off Belts

232



Tube Winding Belts

233



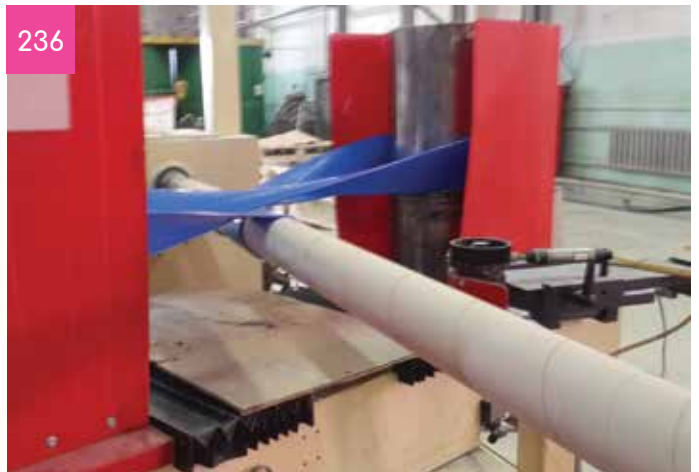
234



235



236



| Plastic Bottle Production



| Carrots Packaging

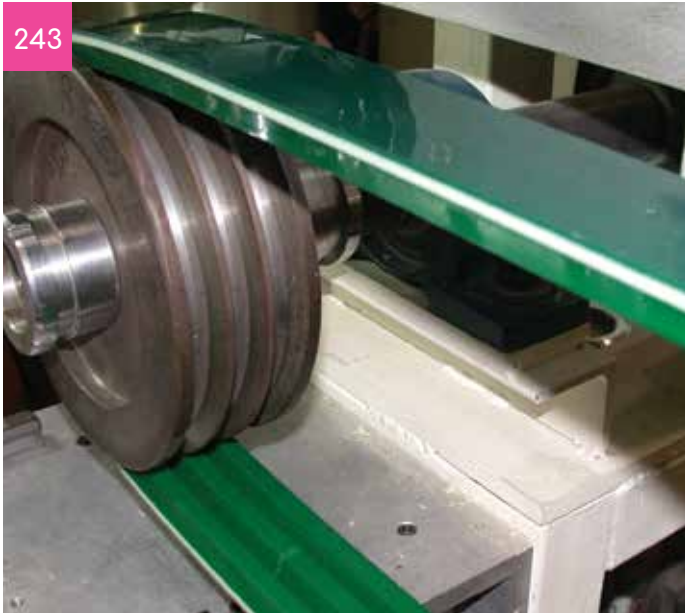


| Automobile Assembly Line Conveyor Belts - FRL-11



Volta Special Composite Power Transmission Belts

243



244



246



247



248



249



The Next Step in Belting

COMPANY PROFILE

Volta Belting Technology Ltd, established in 1965, is the world leader in the manufacture of Thermoplastic Elastomer (TPE) conveyor belting.

Volta's wide range of products have acquired a reputation for their high material strength, superior dimensional exactitude and stability. The materials are cut and wear resistant and impervious to water, oils and other fluids.

Volta has pioneered welding techniques for all belt types enabling fast installation on site and saving valuable downtime as the many service partners around the globe can testify and whose proficiency is supported by hands-on training conducted by Volta.

Product range:

- | VaR - V & Round profiles
- | Flat friction driven belts: monolithic, reinforced with embedded Aramid cords or a fabric under-layer
- | Homogeneous, fully extruded Positive Drive belts
- | Timing belts
- | Power Transmission belts
- | Special belts for wood-processing machinery
- | Spiral belts for Tube Winder machines
- | Haul Off / Caterpillar belts
- | Sleeves for quick coating of steel rollers
- | Composite, custom-made TPE belts e.g. tracks for unmanned robots or assembly line strip belts for automotive factories
- | Replacement for some stainless steel fabrications in lightweight, washable TPE – e.g. funnels and chutes, tubing, skirting and transparent dividers

Volta Belting's SuperDrive™ and Mini SuperDrive™ systems overcome the numerous shortcomings associated with conventional conveyor belts: certified food grade; better cleanability and suitability for all humid food processing than other belt types (see EHEDG Guideline 43); incorporating self-tracking capabilities which improve belt hygiene and reduce conveyor cost while applying Hygienic Design principles.

Volta Belting provides experienced sales and technical service support in more than 50 countries, covering major industrial centers throughout North and South America, Europe, Asia and Africa. On-site training is available at Volta Belting's main fabrication centers in North America and Europe.

Volta Belting innovative belting technology guarantees extended productivity, lower costs of ownership and optimal operation in every installation.

Volta Belting's positive drive and homogeneous food grade belting complies with the following food contact standards and regulations:

- | USDA/FDA approved
- | Requirements of Code of Federal Regulations (CFR21) USDA FDA article 21 CFR 177.2600
- | European Regulation (EU) No. 1935/2004
- | European Regulation (EU) No. 10/2011 amended by 2017/752
- | European Regulation (EU) No. 2023/2006
- | German Regulation BfR XXI

Volta Belting is a member of professional industry organizations:

- | EHEDG (European Hygienic Engineering and Design Group) – see Guideline 43
- | NIBA (National Industrial Belting Association)